

LARGO MONET

Ref. SIE-LAR-MON-01



Extra-large unusual Louis XVI cabriolet.

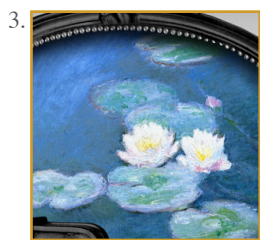
Decor «Nymphéas» by Claude Monet. Exclusive printed leather.

Luxury quality leather.
Traditional filling, biconic spring.
Structure beech wood.

Sculptor flowers decor.

Ribbed legs.
Silver studded.

86 x 80 x 72 cm (h/l/p)
34 x 31 x 29 in.



1. Extra-large unusual Louis XVI cabriolet. Decor «Nymphéas» by Claude Monet exclusive printed leather.
2. Back view.
3. Decor: «Nymphéas» by Claude Monet, exclusive printed leather.

Customization : Each piece may be realised in natural wood tint, or with the colour of leather or fabric you select.
We can also adapt it to dimensions that suit you.

There are also many other adjustments that could be envisaged (adding drawers, change of buttons, etc).
Don't hesitate to tell us what you would like.